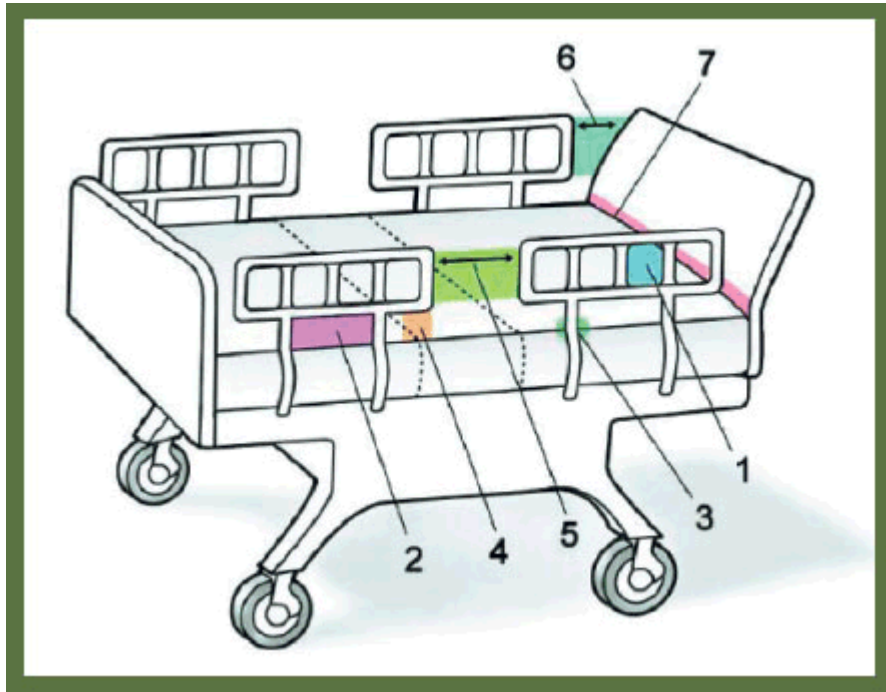




***Helping those with
physical and cognitive disabilities
since 2001.***

Made in Bassett, VA / SleepSafeBed.com / FDA Registered

Meeting or exceeding FDA Guidelines for the **7 Zones of Entrapment**



- ① Within the rail.
- ② Between the top of the compressed mattress and the bottom of the rail, between rail ports.
- ③ Between the Rail and the Mattress.
- ④ Between the top of the compressed mattress and the bottom of the rail, at the end of the rails.
- ⑤ Between the split bed rails.
- ⑥ Between the end of the rail and the side of the head or foot board.
- ⑦ Between the head of footboard and the mattress end.



SleepSafeBed.com

Four SleepSafe® Bed Models



SleepSafe®
Low Bed



SleepSafe® II
Medium Bed



SleepSafer®
Tall Bed



SleepSafer®
Extension Bed

What's the Difference?

Safety Rail Protection

Each model offers an increasing degree of safety rail height protection depending on the medical need of the user.

Transfer Height

Each model offers a different transfer height. This is an important consideration when specifying a bed.



SleepSafeBed.com

Safety Rail Height & Transfer Height



- **Safety Rail Height** is the distance from the Top of the Mattress to the Top of the Safety Rail.
- **Transfer Height** is the distance from the Wooden Panel below the Safety Rail to the Floor.



SleepSafeBed.com

SleepSafe® - LOW BED (*Rail Height*)

- **FIXED FOUNDATION**
 - Bunkie Board - Rail Height: 17¼" or 14"
 - Box Spring - Rail Height: 12" or 8¾"
- **MANUAL ARTICULATION FOUNDATION**
 - Rail Height: 15" or 11¾"
- **MANUAL ELECTRIC COMBO FOUNDATION**
 - Rail Height: LO 11½" to EVEN with rail
- **MANUAL HI-LO FOUNDATION**
 - Rail Height: LO 11½" to EVEN with rail
- **MANUAL HI-LO COMBO FOUNDATION**
 - Rail Height: LO LO 11½" to EVEN with rail
- **ELECTRIC ARTICULATING FOUNDATION**
 - Rail Height: 15" or 11¾"
- **ELECTRIC HI-LO COMBO FOUNDATION**
 - Rail Height: LO 11½" to HI 1¼" below rail
- **TRANSFER HEIGHT** - 22¼" with Safety Rail On



SleepSafeBed.com

SleepSafe® II - MEDIUM BED (*Rail Height*)

- **FIXED FOUNDATION**
 - Bunkie Board - Rail Height: 27" or 21¾"
 - Box Spring - Rail Height: 17¾", 14" or 10"
- **MANUAL ARTICULATION FOUNDATION**
 - Rail Height: 21", 17" or 13¾"
- **MANUAL ELECTRIC COMBO FOUNDATION**
 - Rail Height: LO 21¼" to HI 9½" or LO 16" to HI 4¼"
- **MANUAL HI-LO FOUNDATION**
 - Rail Height: LO 21¼" to HI 9½" or LO 16" to HI 4¼"
- **MANUAL HI-LO COMBO FOUNDATION**
 - Rail Height: LO 21¼" to HI 9½" or LO 16" to HI 4¼"
- **ELECTRIC ARTICULATING FOUNDATION**
 - Rail Height: 21", 17" or 13¾"
- **ELECTRIC HI-LO COMBO FOUNDATION**
 - Rail Height: LO 21¼" to HI 11" or LO 16" to HI 5¾"
- **TRANSFER HEIGHT** - 32" with Safety Rail On



SleepSafeBed.com

SleepSafer® – TALL BED (*Rail Height*)

- **FIXED FOUNDATION**
 - Bunkie Board - Rail Height: 36¼" or 30"
 - Box Spring - Rail Height: 31" or 24¾"
- **MANUAL ARTICULATION FOUNDATION**
 - Rail Height: 34" or 27¾"
- **MANUAL ELECTRIC COMBO FOUNDATION**
 - Rail Height: LO 30½" to HI 18¾"
- **MANUAL HI-LO FOUNDATION**
 - Rail Height: LO 30½" to HI 18¾"
- **MANUAL HI-LO COMBO FOUNDATION**
 - Rail Height: LO 30½" to HI 18¾"
- **ELECTRIC ARTICULATION FOUNDATION**
 - Rail Height: 34" or 27¾"
- **ELECTRIC HI-LO COMBO FOUNDATION**
 - Rail Height: LO 30½" to HI 20¾"
- **TRANSFER HEIGHT** - 26" with Safety Rail On

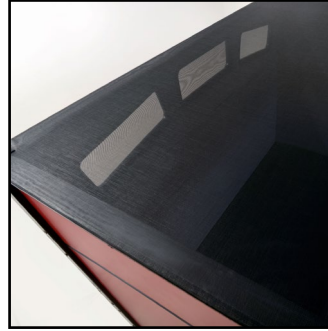


SleepSafeBed.com

SleepSafe® EXTENSION BED (Rail Height)

- **FIXED FOUNDATION**
 - Bunkie Board - Rail Height: 53" or 46¾"
 - Box Spring - Rail Height: 47¾" or 41½"
- **MANUAL ARTICULATION FOUNDATION**
 - Rail Height: 50¾" or 44½"
- **MANUAL ELECTRIC COMBO FOUNDATION**
 - Rail Height: LO 47½" to HI 35¾"
- **MANUAL HI-LO FOUNDATION**
 - Rail Height: LO 47½" to HI 35¾"
- **MANUAL HI-LO COMBO FOUNDATION**
 - Rail Height: LO 47½" to HI 35¾"
- **ELECTRIC ARTICULATION FOUNDATION**
 - Rail Height: 50¾ or 44½"
- **ELECTRIC HI-LO COMBO FOUNDATION**
 - Rail Height: LO 47½" to HI 37¾"
- **TRANSFER HEIGHT**- 26" with Safety Rail On

Outside Looking In



Inside Looking Out



Super Screen Top Fully Encloses the Extension Bed

- Offers Fuller light
- Great Ventilation
- Industrial Grade Mesh
- Trim-Lok attachment
- Strong Stitched Seams



SleepSafeBed.com

SleepSafe® Beds – MANUAL FOUNDATIONS

FOUR CHOICES with easy-to-operate hand cranks.

1) Manual Hi-Lo Combo: **Hi-Lo Foundation with Articulation**

This will raise and lower the mattress height and raise and lower the head and knee section by using the three cranks.

2) Manual Hi-Lo: **Hi-Lo Foundation without Articulation.**

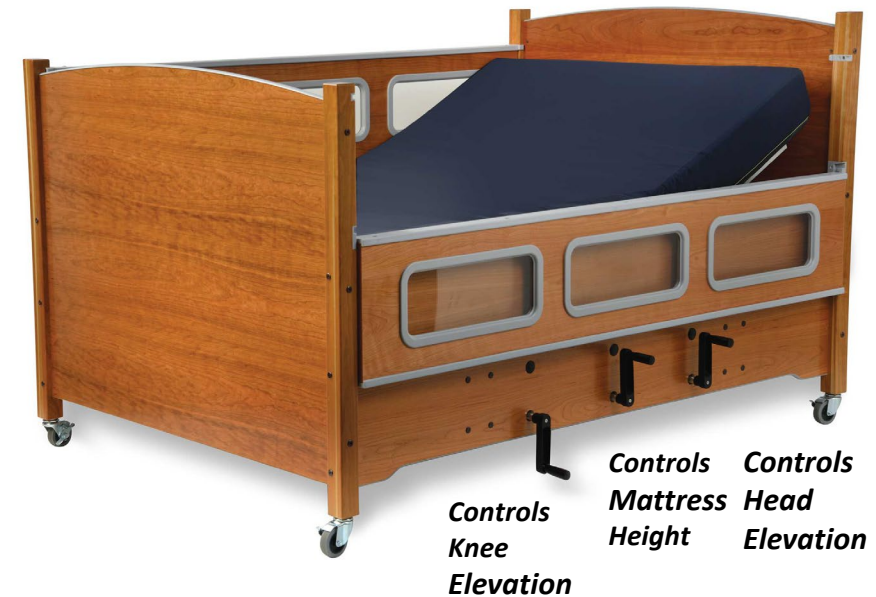
This will raise and lower the mattress height by using one crank located in the center of the front panel of the bed.

3) Manual Electric: **Manual Hi-Lo with Electric Articulation**

This will raise and lower mattress manually and raise and lower the head and/or knee section electrically with remote.

4) Manual Articulation: **Articulating Foundation without Hi-Lo.**

This will raise and lower the head and/or knee section of the bed by using two cranks located in the front panel of the bed.



SleepSafeBed.com

Wood Choices

SleepSafe® Beds can be built with wood or color finishes:



Color Choices



Customization Options

- **PADDING**
- **IV POLE & IV ACCESS**
- **HEADBOARD/FOOTBOARD WINDOWS**
- **DUAL VIEW** (*SleepSafer® only*)
- **DREAMA Positioning System** *by Jenx*
- **SUPER SCREEN WINDOWS**



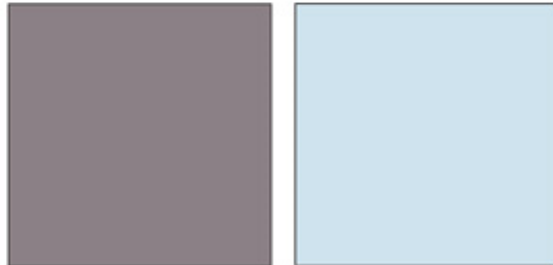
SleepSafeBed.com

Padding Colors



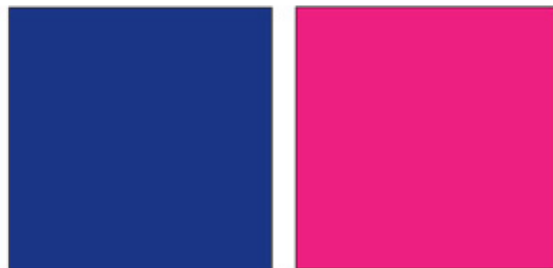
Cream

Gray



Taupe

Light Blue



Dark Blue

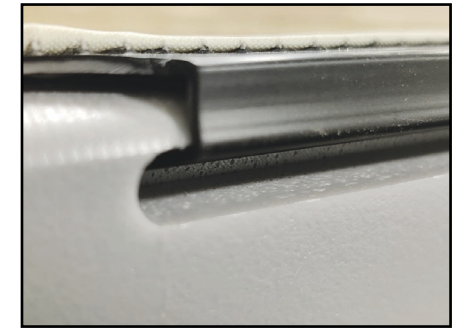
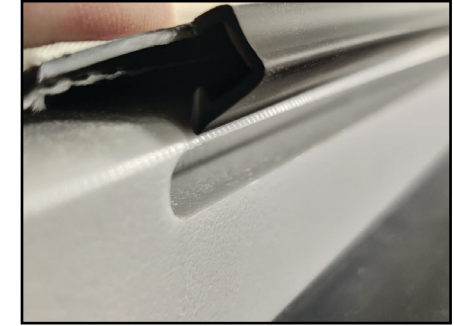
Pink

Padding Options

- Padding Over or Around Windows
- New Trim-Lok system securely attaches pads to safety rails.



Pink Padding
around Windows



Trim-Lok Snaps Pads into
place on safety rail.



SleepSafeBed.com

IV Pole Installation & Access for tubing

- **IV pole**

Shown pictured on headboard. IV Pole can be mounted to any suitable location on the bed. Please consult with medical professionals beforehand.

- **Access for IV Tubing**

Shown pictured on headboard. Access for IV tubing and be installed in any suitable location in the bed. Please consult with medical professionals beforehand.



SleepSafeBed.com

SleepSafe® Bed Mattresses

- **Memory Foam Mattress with Gel Technology**

- CertiPUR-US® compliant foam
- Optimized pressure redistribution
- Rapid heat dissipation
- Increased breathability

- **CertiPUR-US compliant foam products:**

- Low Emissions (VOC's)
- BPA Phthalate – Free
- Made without Ozone Depleters
- Mercury, Lead and Heavy Metal Free
- Made without Formaldehyde
- CFC – Free
- BHT – Free
- Methylene Chloride – Free
- PBDE – Free



SleepSafeBed.com

Shipping Time

- Beds ship in about 3 weeks from date of order.
- We understand emergency situations happen, please call our office if you need your bed sooner.



Customer Service

- **Toll Free:** [866-852-2337](tel:866-852-2337) (*Tech Support*)
- **Local:** [276-627-0088](tel:276-627-0088)
- **Fax:** [276-627-0234](tel:276-627-0234)
- **Email:** SleepSafeBed@SleepSafeBed.com
- **Web Address:** SleepSafeBed.com
- **Address:** [3629 Reed Creek Drive,
Bassett, VA 24055](#)
- **Hours of operation:**
[Monday through Friday](#)
[Hours: 8:00 am – 5:00 pm EST](#)



SleepSafeBed.com

Thank you for your time.

- Feel free to contact us about our products.

866-852-2337

Email: SleepSafeBed@SleepSafeBed.com



SleepSafeBed.com



We're here to help.