

SAFETY RAIL PADDING KIT

Installing Caps and Pads with Trim-Lok

Includes: Top and bottom Safety Rail Caps, Padding and Hardware

Tools Needed: 4mm Allen Wrench (Included) and Drill with Phillips bit



3629 Reed Creek Dr. / Bassett, VA 24055

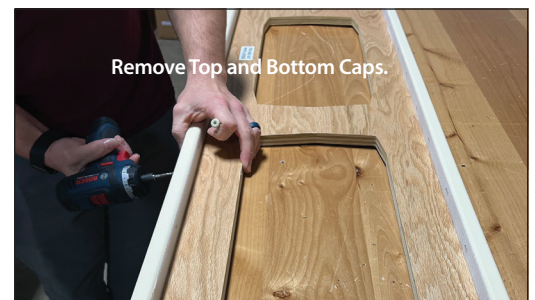
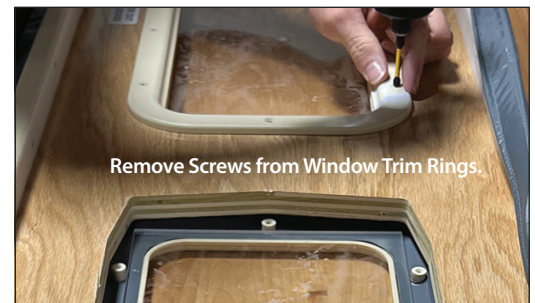
Toll Free: 866.852.2337

SleepSafeBed.com

sleepsafebed@sleepsafebed.com

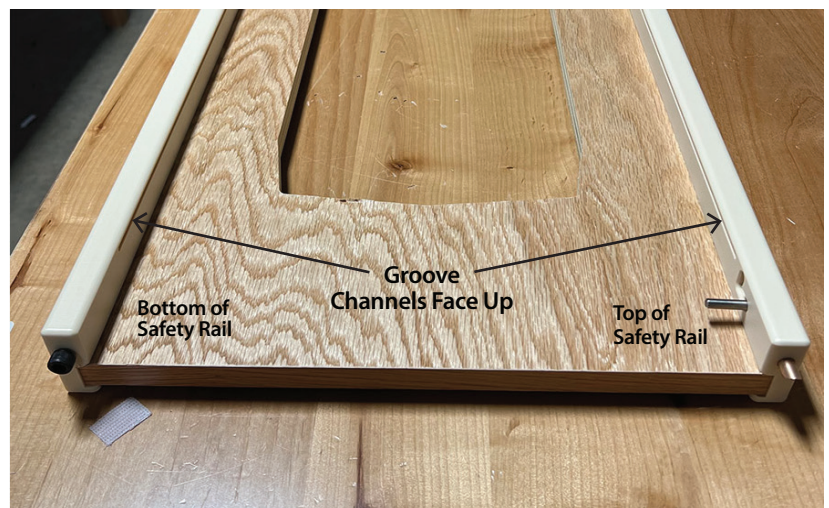
1 REMOVE OLD PADDING

Remove Safety Rail and set with padding side down on a hard surface. Pull padding firmly to separate from Velcro. Use drill to remove screws from window trim rings and set window and trim rings aside. Remove top and bottom caps and dispose.



2 ATTACH NEW SAFETY RAIL CAPS

With groove channels facing up, attach the new safety rail caps using hex screws and allen wrench



3 ATTACH PADDING TO WINDOW TRIM RINGS

Set window trim rings, smooth side down, on a firm, flat surface. Set new padding with velcro strip side up. Align both layers so the holes in the padding can be fixed on the posts in the window trim rings.



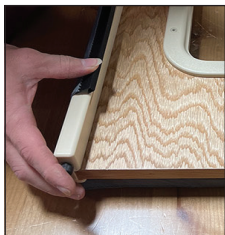
4 ATTACH PADDING WITH TRIM-LOK TO SAFETY RAIL

Set safety rail on top of padding. Make sure Trim-Lok groove channel is facing up. Reinsert windows and place trim rings on top, attach using screws. Do not over tighten.



5 PULL PADDING OVER CAP. SNAP TRIM-LOK INTO GROOVE CHANNEL

Pull padding over the cap and push Trim-Lok into groove channel. Start at one end and work your way to the other.



It should be even on both ends. Insure that Trim-Lok is fully locked in place. Repeat on the opposite side. Once complete, reinstall safety rails.

