

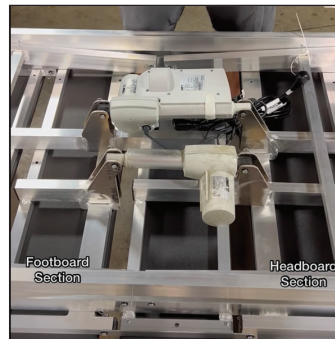
# REPLACING LINAK CONTROLS

How to replace the LINAK control box, head & foot actuators with T-MOTION components. (Articulation only. No Hi-Lo Controls)

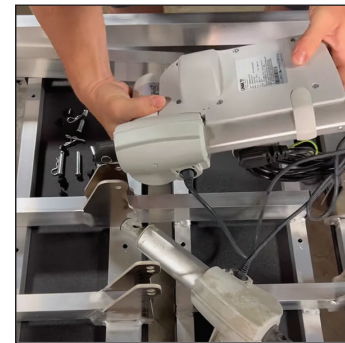
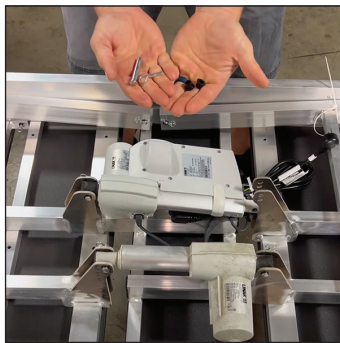


3629 Reed Creek Dr. / Bassett, VA 24055  
Toll Free: 866.852.2337 / SleepSafeBed.com  
sleepsafebed@sleepsafebed.com

- 1** **DISASSEMBLE BED TO REVEAL FRAME. FLIP FRAME OVER TO ACCESS CONTROLS.**  
The bed needs to be prepared for the replacement. Remove the side panels, headboard and footboard, to reveal frame. Flip to reveal controls. If saved, use cardboard lifts or substitute way to elevate the frame.



- 2** **REMOVE BOTH LINAK COMPONENTS. FOOT ACTUATOR FIRST.**  
You will be removing both Linak units. Locate and remove all 4 Cotter pins, 4 clevis pins, and 8 rubber bushings. **KEEP THESE PARTS.** REMEMBER HOW THEY ARE WORK to install the T-Motion components.



- 3** **PLAN OUT THE T-MOTION COMPONENTS. REMOVE CONTROL BOX SHIELDING.**  
At this stage you will be positioning the new T-Motion Control Box and removing the shield to allow the cables to be plugged into the ports for operating the head actuator, foot actuator, and remote.



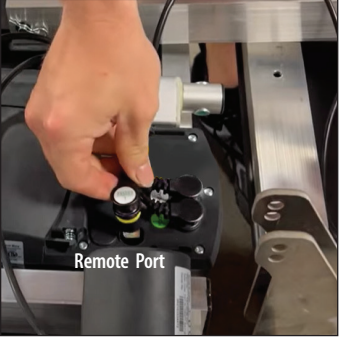
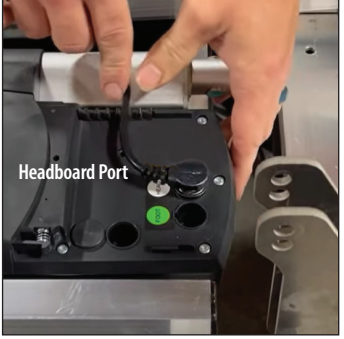
# REPLACING LINAK CONTROLS

How to replace the LINAK control box, head and foot actuators with the new T-MOTION components.

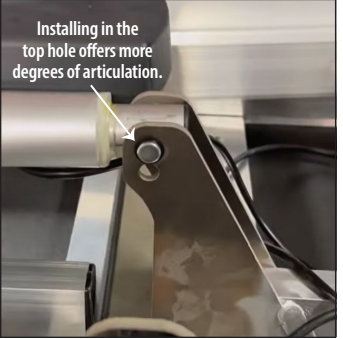
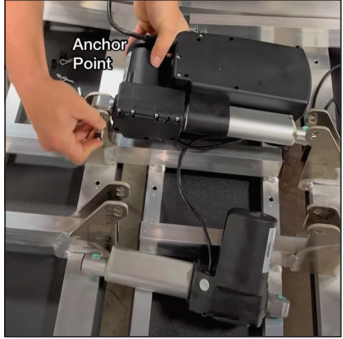
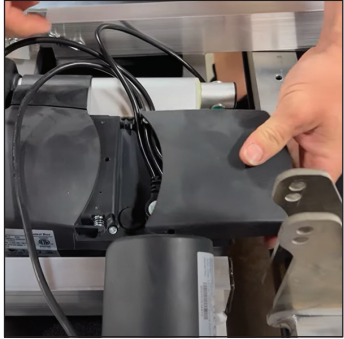


3629 Reed Creek Dr. / Bassett, VA 24055  
Toll Free: 866.852.2337 / SleepSafeBed.com  
sleepsafebed@sleepsafebed.com

- 4** **PLUG CABLES INTO APPROPRIATE T-MOTION CONTROL BOX PORTS.**  
Three cables need be plugged into the appropriate T-Motion control box ports for proper operation. First, the headboard actuator cable, then the footboard actuator cable, and finally the cable to the handheld remote.



- 5** **INSTALL THE T-MOTION CONTROL BOX ACTUATOR**  
Replace the control panel sheath and turn the unit over for installation. Using the hardware you saved, attach the control box to the anchor point. Then install to the bracket for the acutating side.



- 6** **FINISH INSTALLING THE FOOT ACTUATOR. CHECK FOR PROPER OPERATION.**  
Cotter pins, clevis pins, and rubber bushings should all be arranged as they were found on the Linak installation. Plug in the unit to test operation. A video of this process is available by clicking the QRcode.

