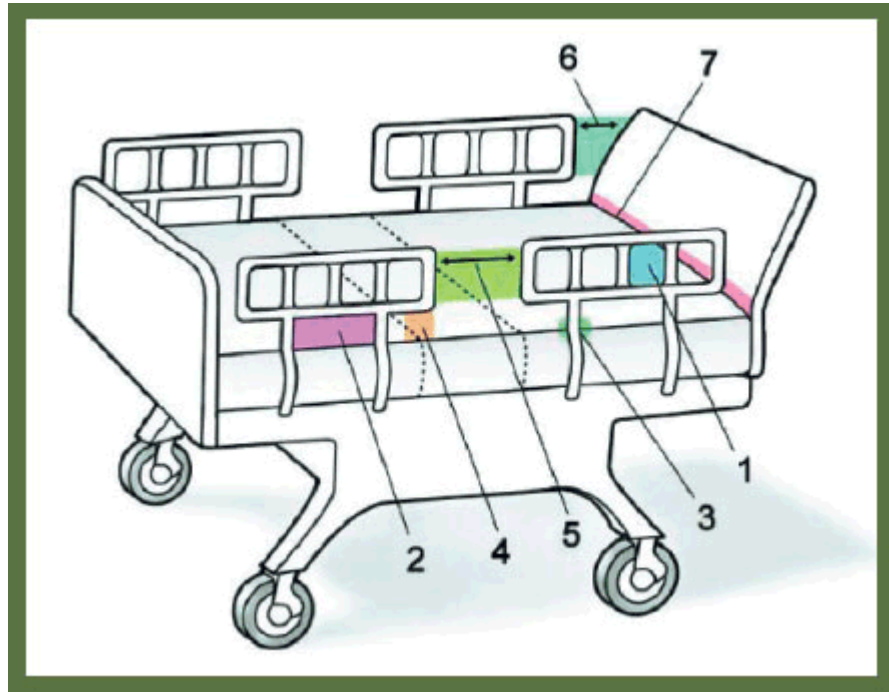




***Helping those in need  
of complex rehab or care  
since 2001.***

Made in Bassett, VA / [SleepSafeBed.com](http://SleepSafeBed.com)

# Meeting or exceeding FDA Guidelines for the **7 Zones of Entrapment**



- ① Within the rail.
- ② Between the top of the compressed mattress and the bottom of the rail, between rail ports.
- ③ Between the Rail and the Mattress.
- ④ Between the top of the compressed mattress and the bottom of the rail, at the end of the rails.
- ⑤ Between the split bed rails.
- ⑥ Between the end of the rail and the side of the head or foot board.
- ⑦ Between the head of footboard and the mattress end.



[SleepSafeBed.com](http://SleepSafeBed.com)

# Four SleepSafe® Bed Models



SleepSafe®  
Low Bed



SleepSafe® II  
Medium Bed



SleepSafer®  
Tall Bed



SleepSafer®  
Extension Bed

## What's the Difference?

### Safety Rail Protection

Each model offers an increasing degree of safety rail height protection depending on the medical need of the user.

### Transfer Height

Each model offers a different transfer height. This is an important consideration when specifying a bed.



[SleepSafeBed.com](http://SleepSafeBed.com)

# Safety Rail Height & Transfer Height



- **Safety Rail Height** is the distance from the Top of the Mattress to the Top of the Safety Rail.
- **Transfer Height** is the distance from the Wooden Panel below the Safety Rail to the Floor.



[SleepSafeBed.com](http://SleepSafeBed.com)

# SleepSafe® - LOW BED (*Rail Height*)

- **FIXED FOUNDATION**
  - Bunkie Board - Rail Height: 17¼" or 14"
  - Box Spring - Rail Height: 12" or 8¾"
- **MANUAL ARTICULATION FOUNDATION**
  - Rail Height: 15" or 11¾"
- **MANUAL ELECTRIC COMBO FOUNDATION**
  - Rail Height: LO 11½" to EVEN with rail
- **MANUAL HI-LO FOUNDATION**
  - Rail Height: LO 11½" to EVEN with rail
- **MANUAL HI-LO COMBO FOUNDATION**
  - Rail Height: LO LO 11½" to EVEN with rail
- **ELECTRIC ARTICULATING FOUNDATION**
  - Rail Height: 15" or 11¾"
- **ELECTRIC HI-LO COMBO FOUNDATION**
  - Rail Height: LO 11½" to HI 1¼" below rail
- **TRANSFER HEIGHT** - 22¼" with Safety Rail On



[SleepSafeBed.com](http://SleepSafeBed.com)

# SleepSafe® II - MEDIUM BED (*Rail Height*)

- **FIXED FOUNDATION**
  - Bunkie Board - Rail Height: 27" or 21¾"
  - Box Spring - Rail Height: 17¾", 14" or 10"
- **MANUAL ARTICULATION FOUNDATION**
  - Rail Height: 21", 17" or 13¾"
- **MANUAL ELECTRIC COMBO FOUNDATION**
  - Rail Height: LO 21¼" to HI 9½" or LO 16" to HI 4¼"
- **MANUAL HI-LO FOUNDATION**
  - Rail Height: LO 21¼" to HI 9½" or LO 16" to HI 4¼"
- **MANUAL HI-LO COMBO FOUNDATION**
  - Rail Height: LO 21¼" to HI 9½" or LO 16" to HI 4¼"
- **ELECTRIC ARTICULATING FOUNDATION**
  - Rail Height: 21", 17" or 13¾"
- **ELECTRIC HI-LO COMBO FOUNDATION**
  - Rail Height: LO 21¼" to HI 11" or LO 16" to HI 5¾"
- **TRANSFER HEIGHT** - 32" with Safety Rail On



[SleepSafeBed.com](http://SleepSafeBed.com)

# SleepSafer® – TALL BED (*Rail Height*)

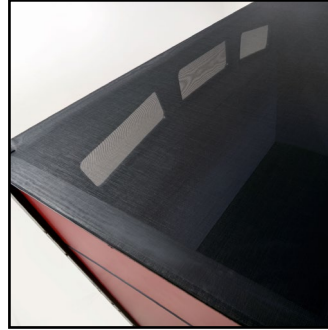
- **FIXED FOUNDATION**
  - Bunkie Board - Rail Height: 36¼" or 30"
  - Box Spring - Rail Height: 31" or 24¾"
- **MANUAL ARTICULATION FOUNDATION**
  - Rail Height: 34" or 27¾"
- **MANUAL ELECTRIC COMBO FOUNDATION**
  - Rail Height: LO 30½" to HI 18¾"
- **MANUAL HI-LO FOUNDATION**
  - Rail Height: LO 30½" to HI 18¾"
- **MANUAL HI-LO COMBO FOUNDATION**
  - Rail Height: LO 30½" to HI 18¾"
- **ELECTRIC ARTICULATION FOUNDATION**
  - Rail Height: 34" or 27¾"
- **ELECTRIC HI-LO COMBO FOUNDATION**
  - Rail Height: LO 30½" to HI 20¾"
- **TRANSFER HEIGHT** - 26" with Safety Rail On



[SleepSafeBed.com](http://SleepSafeBed.com)

# SleepSafe® EXTENSION BED (Rail Height)

Outside Looking In



Inside Looking Out



- **FIXED FOUNDATION**
  - Bunkie Board - Rail Height: 53" or 46¾"
  - Box Spring - Rail Height: 47¾" or 41½"
- **MANUAL ARTICULATION FOUNDATION**
  - Rail Height: 50¾" or 44½"
- **MANUAL ELECTRIC COMBO FOUNDATION**
  - Rail Height: LO 47½" to HI 35¾"
- **MANUAL HI-LO FOUNDATION**
  - Rail Height: LO 47½" to HI 35¾"
- **MANUAL HI-LO COMBO FOUNDATION**
  - Rail Height: LO 47½" to HI 35¾"
- **ELECTRIC ARTICULATION FOUNDATION**
  - Rail Height: 50¾ or 44½"
- **ELECTRIC HI-LO COMBO FOUNDATION**
  - Rail Height: LO 47½" to HI 37¼"
- **TRANSFER HEIGHT**- 26" with Safety Rail On



## Super Screen Top Fully Encloses the Extension Bed

- Offers Fuller light
- Great Ventilation
- Industrial Grade Mesh
- Trim-Lok attachment
- Strong Stitched Seams



[SleepSafeBed.com](http://SleepSafeBed.com)



# **New! InSIGHT®** *by SleepSafe® Beds*

## **All Inclusive!**

- Fixed Twin Foundation
- See-through SuperScreen  
360° Surround and Top
- Mattress/Bunkie Board Combo
- Tubing Access Port
- Padded Sides and Corners
- Removeable Casters
- Quick Lock Zipper Tab
- Shipping in 48 states



### **Quick, Easy Zippered Access**

Opening Size: 55' wide by 42" high

### **Transfer Height**

16" without casters 20" with casters

## **Available Now!**

Contact  
Customer Support at  
866-852-2337 for  
ordering information.  
Expect up to 6 weeks  
for delivery.



**SleepSafeBed.com**

# SleepSafe® Beds – MANUAL FOUNDATIONS

## FOUR CHOICES with easy-to-operate hand cranks.

### 1) Manual Hi-Lo Combo: **Hi-Lo Foundation with Articulation**

This will raise and lower the mattress height and raise and lower the head and knee section by using the three cranks.

### 2) Manual Hi-Lo: **Hi-Lo Foundation without Articulation.**

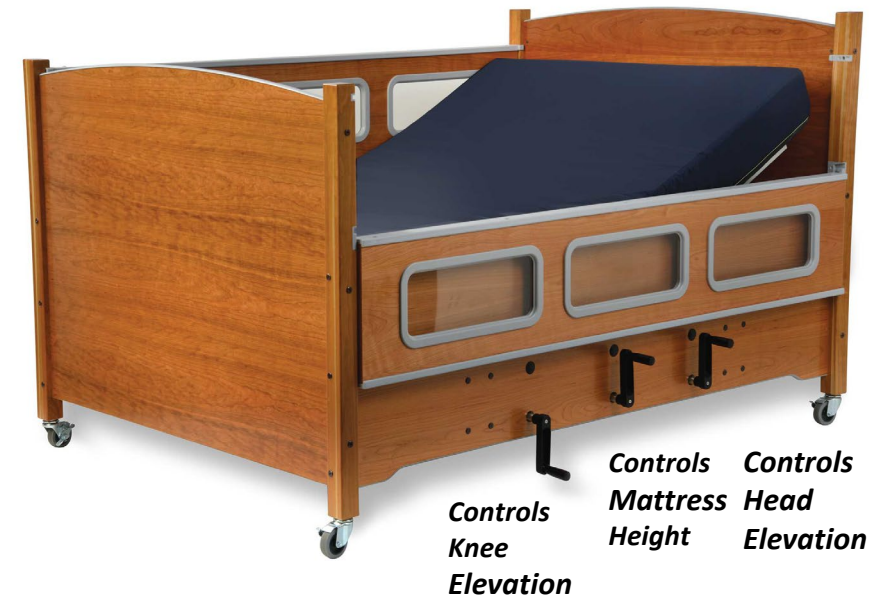
This will raise and lower the mattress height by using one crank located in the center of the front panel of the bed.

### 3) Manual Electric: **Manual Hi-Lo with Electric Articulation**

This will raise and lower mattress manually and raise and lower the head and/or knee section electrically with remote.

### 4) Manual Articulation: **Articulating Foundation without Hi-Lo.**

This will raise and lower the head and/or knee section of the bed by using two cranks located in the front panel of the bed.



[SleepSafeBed.com](http://SleepSafeBed.com)

# Wood Choices

*SleepSafe® Beds can be built with wood or color finishes:*



# Color Choices



# Customization Options

- **PADDING**
- **IV POLE & IV ACCESS**
- **HEADBOARD/FOOTBOARD WINDOWS**
- **DUAL VIEW** (*SleepSafer® only*)
- **DREAMA™ Positioning System** *by Jenx*
- **SUPER SCREEN WINDOWS**



[SleepSafeBed.com](http://SleepSafeBed.com)

## Padding Colors



Cream



Gray



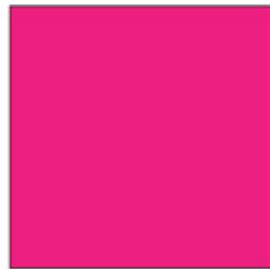
Taupe



Light Blue



Dark Blue



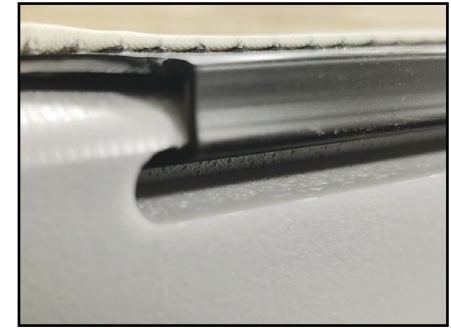
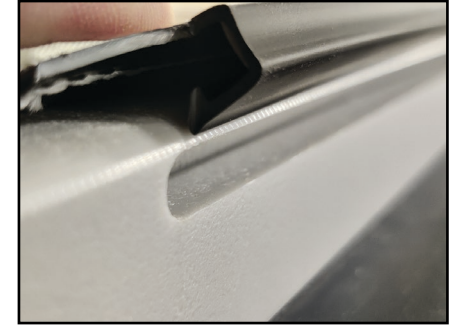
Pink

# Padding Options

- Padding Over or Around Windows
- New Trim-Lok system securely attaches pads to safety rails.



Pink Padding  
around Windows



Trim-Lok Snaps Pads into  
place on safety rail.



[SleepSafeBed.com](http://SleepSafeBed.com)

# IV Pole Installation & Access for tubing

- **IV pole**

Shown pictured on headboard. IV Pole can be mounted to any suitable location on the bed. Please consult with medical professionals beforehand.

- **Access for IV Tubing**

Shown pictured on headboard. Access for IV tubing and be installed in any suitable location in the bed. Please consult with medical professionals beforehand.



[SleepSafeBed.com](http://SleepSafeBed.com)

# SleepSafe® Bed Mattresses

- **Memory Foam Mattress with Gel Technology**

- CertiPUR-US® compliant foam
- Optimized pressure redistribution
- Rapid heat dissipation
- Increased breathability

- **CertiPUR-US compliant foam products:**

- Low Emissions (VOC's)
- BPA Phthalate – Free
- Made without Ozone Depleters
- Mercury, Lead and Heavy Metal Free
- Made without Formaldehyde
- CFC – Free
- BHT – Free
- Methylene Chloride – Free
- PBDE – Free



[SleepSafeBed.com](http://SleepSafeBed.com)

# Shipping Time

- Beds ship in about 3 weeks from date of order.
- We understand emergency situations happen, please call our office if you need your bed sooner.



# Customer Service

- **Toll Free:** [866-852-2337](tel:866-852-2337) (*Tech Support*)
- **Local:** [276-627-0088](tel:276-627-0088)
- **Fax:** [276-627-0234](tel:276-627-0234)
- **Email:** [SleepSafeBed@SleepSafeBed.com](mailto:SleepSafeBed@SleepSafeBed.com)
- **Web Address:** [SleepSafeBed.com](http://SleepSafeBed.com)
- **Address:** [3629 Reed Creek Drive, Bassett, VA 24055](#)
- **Hours of operation:**  
[Monday through Friday](#)  
[Hours: 8:00 am – 5:00 pm EST](#)



[SleepSafeBed.com](http://SleepSafeBed.com)



# Thank you for your time.

- Feel free to contact us about our products.

**866-852-2337**

Email: [SleepSafeBed@SleepSafeBed.com](mailto:SleepSafeBed@SleepSafeBed.com)



**[SleepSafeBed.com](http://SleepSafeBed.com)**

**We're here to help.**

